

Te Poari ā-Rohe o Rodney
Te Rīpoata ā-Tau 2019/2020

Rodney Local Board

Annual Report 2019/2020



Volume
2.16

Mihi

Tēnā, ngā mihi te tukuna atu nei ki a koutou
 e nga manawhenua
 e kapekape tonu nei
 i ngā ahikā roa e horapa mai nā
 ki te taha whakararo o te tīpua tāone nei
 o Tāmaki Makaurau.
 Kia pāorooro tēnei karere
 mā runga i ō maunga whakahī.
 Kia tīmata ake au i te Kumeū,
 ka rere whakawaho ki te one tapu o Muriwai.
 Kia hoki ake ki uta, ko Tauwhare ki te rāwhiti,
 a Tarawera ki te raki,
 ki te taha whakaroto
 ko Tuhirangi rāua ko Te Atuanui
 Kia kauhoe ngā mihi mā te moana
 ki te Araparera
 ko koe tēnā e Taranaki,
 ka kapi ngā pou tauawhi i a te Kaipara
 i hua ai te kōrero,
 “E tupu i wīwī, i wāwā, tūria i te wera,
 piri ki te rito o te rengarenga,
 waiho me whakapakari ki te hua o te kawariki.”

Ināiane me māwhiti aku kupu ki Kaiwaka,
 ki Pukekaroro ki te raraunga o te tini i mate,
 te aroha tonutia i muri nei.
 Kia tahuri iho rā ia ki Matakana,
 ko Tamahunga tērā e tū mai rā i te pae.
 Ka hīkoi aku mihi mā ngā kāhiwi
 kia heke iho ki te awa o Pūhoi
 kia rere aku mihi ki te tuawhenua
 i nohoa e te iti me te rahi.
 Kia ū mai anō taku haere ki Huapai,
 ā-tangata, ā-whenua.
 Nō rātou te whiwhi, nō mātou te whiwhi,
 kia kī ake ai tātou katoa,
 “He rohenga tangata,
 he iwi tōpuni,
 mōwai tonu te whenua e takoto nei e.”

Our greetings and salutations to you
 the mana whenua
 who continue to tend
 the historical fires that encompass
 this great city
 of Auckland.
 May this message echo
 across your noble mountains.
 Let me begin at Kumeū
 then turn outwards to the sacred sands of Muriwai.
 I hook inward again where eastward, is Tauwhare,
 to the north is Tarawera,
 and inland stands
 Tuhirangi and Atuanui.
 Let this greeting travel the inland sea
 to Araparera
 where Taranaki
 completes the guardians of the Kaipara,
 who inspired the proclamation,
 “People will grow here and there, upright in the heat,
 hiding like the shoots of the rengarenga,
 and maturing like the fruit of the kawariki.”

Now let my words cross to Kaiwaka
 and Pukekaroro, the scene of past losses
 that are still mourned today.
 Turning then to Matakana,
 where stands Tamahunga on the horizon.
 Let this greeting follow the ridgeline
 down to the Pūhoi River
 where it can return inland to the valleys
 where the original settlers came.
 Our journey ends at Huapai,
 of people, and land.
 Their good fortune is our shared providence,
 so, the axiom,
 “The community
 are people in communion,
 and a calm lies over the land.”

On the cover: Children riding on bike track at Wainui Primary School.

He kōrero mō tēnei rīpoata About this report

This annual report tells the story of how Auckland Council has performed in delivering services in the Rodney Local Board area from 1 July 2019 to 30 June 2020.

You can read about our progress, expenditure, service performance and challenges faced in 2019/2020. It's part of the wider annual reporting package for the Auckland Council Group and meets our Local Government Act 2002 obligations to report on our performance against agreed measures. It also reports against the council's Long-term Plan 2018-2028 (10-year Budget 2018-2028) and the Rodney Local Board Agreement 2019/2020.

This report also reflects the local flavour of your area by profiling its population, people and council facilities. It also features a story about a council or community activity that adds special value to the area and demonstrates how **together we're delivering for Auckland.**

CONTENTS

Mihi	2
About this report	3
From the chairperson	4
Our board	5
Our area	6
Performance report	8
Local flavour	13
Financial information	14



Children playing at Anchor Bay, Tāwharanui Regional Park.

He kōrero mai i te heamana

From the Chairperson



It has certainly been a difficult time for everyone over the past few months as we've tried to deal with the effects of COVID-19.

The pandemic has affected access to funding for our local board and the ability for us to deliver work for our community. Many projects were put on hold. We're now prioritising and getting as many projects as we can back on track over the coming year so that we can continue delivering on our local board plan. Despite the recent challenges, we were able to complete a significant number of projects over the last financial year.

I was very pleased that in May 2020 we agreed with Auckland Transport (AT) on a way forward for its Seal Extension Programme. In short, this means that AT will broaden the use of the existing seal extension budget to make it available for a wider range of unsealed road improvements, including road widening, safety improvements, pavement strengthening and seal extensions.

We renewed three sports fields at Rautawhiri Park in Helensville. We also renewed South Head Hall, Tauhoa Hall, Waimauku Memorial Hall, and carried out a comprehensive renewal on Wellsford Community Centre.

Significant work to upgrade tracks and renew signage to protect native kauri trees from kauri dieback has progressed, including in Parry Kauri Park.

We completed the decking and other work to create a community space adjacent to the Kumeū Arts Centre and Kumeū Library.

The design, consultation and planning work on new toilet blocks in Wellsford and in William Fraser Reserve in Omaha is complete. Both are now progressing to physical works.

The assessment of service needs based on feedback from local sports groups for our board's One Local Initiative (OLI), the Kumeū-Huapai Indoor Court Facility, is complete. We're now working on the detailed business case.

This is a small sample of what we've done in the past year. Get in touch with us or visit our Facebook page if you'd like to keep up to date with what we're doing.

Thank you to all the individuals and community groups that have contributed to our local board area in the last year - we look forward to continuing our work with you.

Phelan Pirrie
Chairperson, Rodney Local Board

Te Poari ā-Rohe o Rodney

Rodney Local Board



Your board

(L to R) Vicki Kenny, Tim Holdgate, Colin Smith, Steven Garner, Beth Houlbrooke (Deputy Chairperson), Danielle Hancock, Phelan Pirrie (Chairperson), Brent Bailey, Louise Johnston.



50 Centreway Road, Orewa



09 301 0101



Open Monday-Friday, 8.30am-5pm
Closed Saturday, Sunday and public holidays



rodneyllocalboard@aucklandcouncil.govt.nz



Auckland Council
Private Bag 92300, Auckland 1142



aucklandcouncil.govt.nz/rodney

Ngā kaupapa me ngā whakapaipai ake


Rodney projects and improvements

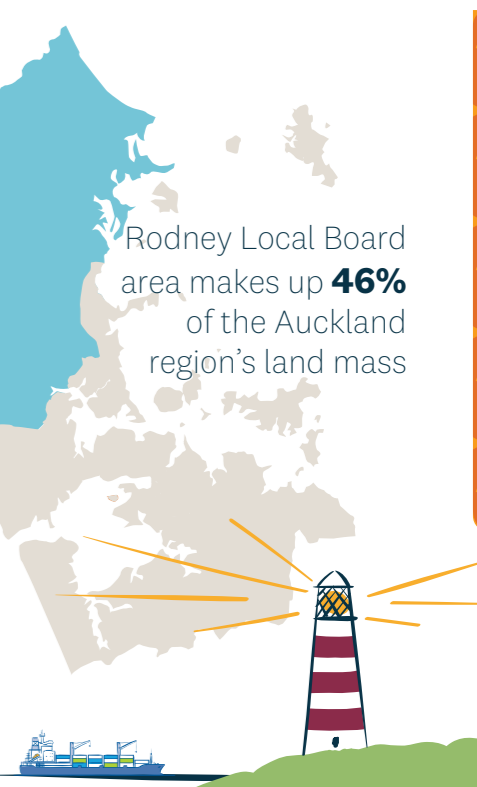
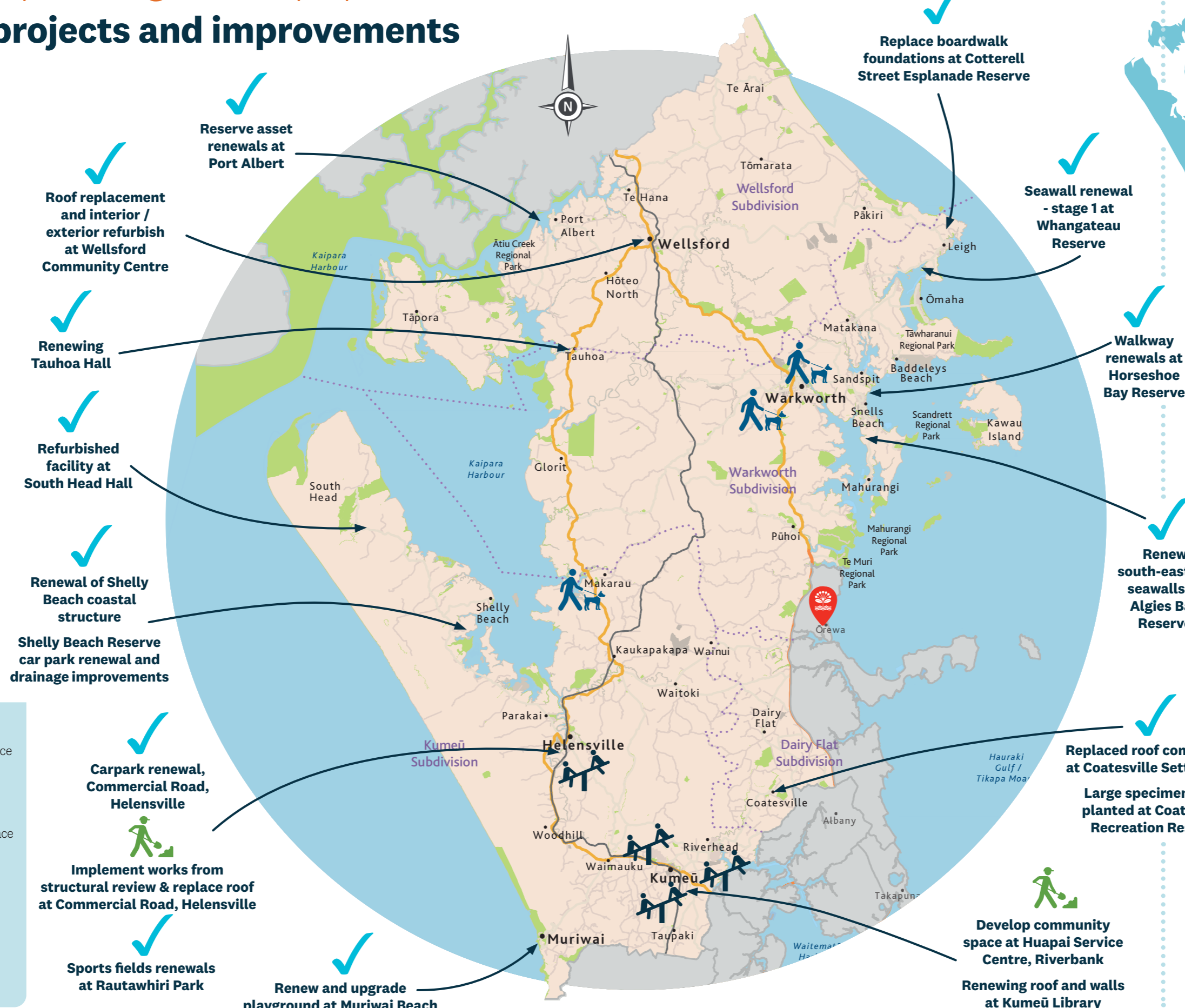
KEY TO CURRENT AND PLANNED PROJECTS

-  **Delivered projects**
-  **Current projects**
-  **Current playground renewals**
-  **Current track renewals**

Data sources: Statistics New Zealand Population Estimates (2017), and Population Projections (2013-base).

LEGEND

-  Local board office
-  Local Board Subdivision Boundary
-  Public open space (Unitary Plan)
-  Motorway
-  Major road
-  Arterial road
-  Medium road
-  Minor road



Rodney has more than **1500km** of coastline
37 towns and villages



We are home to more than **350** local parks, **5** libraries, **23** council-owned community halls



Tā mātou pūrongo whakahaere mahi

Our performance report

● **Achieved**
Target has been met or exceeded

● **Substantially achieved**
Target has not been met by a slim margin (+/-2%)

● **Not achieved**
Target not achieved

▲ **Progress made**
Result improved from prior-year result

— **No change**
No change from prior-year result

▼ **No improvements**
Not improved from prior-year result

* **Impacted by COVID-19**
Measures favourably / unfavourably impacted by COVID-19

Local Community Services

We renewed seawalls at Algies Bay, Whangateau Reserve and Shelly Beach, and completed building works at Wellsford Community Centre. We also completed the renewal of the carpark and drainage at Shelly Beach Reserve, upgrade of the playground at Muriwai Beach, and renewal of walkways at Horseshoe Bay Reserve. We supported the Helensville Arts Centre (\$20,000) and Kumeū Arts Centre (\$40,000) with operational grants. We funded ecological volunteers who contributed more than 5000 volunteer hours across the Local Board area, and we also provided funding to support the activation of the Warkworth Town Hall.

	Results against target	Year-on-year change	2020 Target	2020 Result	2019	2018	How did we perform
Provide safe, reliable and accessible social infrastructure for Aucklanders that contributes to placemaking and thriving communities							
Percentage of Aucklanders that feel their local town centre is safe - day time	●	▼	92%	89%	91%	90%	Comments in the residents survey noted that respondents feel unsafe due to a number of factors, including an increase in homelessness, some recent incidents of crime, and a lack of police presence.
Percentage of Aucklanders that feel their local town centre is safe - night time	●	▼	42%	51%	56%	55%	
Utilising the Empowered Communities Approach, we support Aucklanders to create thriving, connected and inclusive communities							
The percentage of Empowered Communities activities that are community led ¹	●	▼	50%	71%	75%	New Measure	Community-led practice is a core way of working in Rodney. Activities undertaken are supporting community-led initiatives or done in partnership with communities in line with the board's community empowerment outcome.
The percentage of Empowered Communities that build capacity and capability to assist local communities to achieve their goal ¹	●	▼	50%	19%	68%	New Measure	The majority of groups and organisations in Rodney have considerable capacity and do not need capacity building. This resulted in less than planned capacity and capability building activities delivered for the Rodney Local Board. The main area of work in relation to the capacity of groups involves internal work with the council needing to be more enabling and reducing barriers to communities doing things for themselves.
We fund, enable and deliver arts and culture experiences that enhance identity and connect people							
The percentage of arts, and culture programmes, grants and activities that are community led	●	—	95%	100%	100%	New Measure	This target has been exceeded due to all programmes being community-led.
We fund, enable and deliver community events and experiences that enhance identity and connect people							
The percentage of attendees satisfied with a nominated local community event			75%	Not measured	76%	New Measure	The Mahurangi Festival of Lights event scheduled for surveying was unable to be held due to COVID-19 restrictions on holding public events.
We provide art facilities, community centres and hire venues that enable Aucklanders to run locally responsive activities, promoting participation, inclusion and connection							
The number of participants in activities at art facilities, community centres and hire venues	●	▼	89,838	129,707*	158,603	New Measure	Community venues facilitated food containers from 2 April in Wellsford Community Centre and NZ Blood Service used Warkworth Town Hall on 6 May.
The percentage of art facilities, community centres and hire venues network that is community led	●	—	68%	64%	64%	New Measure	There has been no change in the model of operation of these facilities compared to the previous financial year. This target has been revised in 2020/2021 to reflect the current model of operation.
We provide library services and programmes that support Aucklanders with reading and literacy, and opportunities to participate in community and civic life							
The number of internet sessions at libraries (unique sessions over public computing or public Wi-Fi networks)	●	▼	230,000	152,111*	215,408	New Measure	PC and Wi-Fi sessions are in continuous decline, and the libraries closure for about 9-11 weeks in response to COVID-19 has impacted the trend further.
The number of visits to library facilities	●	▼	350,000	327,581*	400,072	New Measure	Visits to Rodney libraries were on track to reach the annual target until libraries were closed for about 9-11 weeks due to COVID-19 restrictions.
Percentage of customers satisfied with the quality of library service delivery	●	—	85%	97%	97%	96%	The high level of overall satisfaction has been driven to a large extent by the great service delivered by staff. The satisfaction is one of the highest in Auckland.

Local Community Services measures Cont'd over

Local Community Services cont'd

We provide recreation programmes, opportunities and facilities to get Aucklanders more active, more often							
The percentage of park visitors who are satisfied with the overall quality of sportsfields			70%	80%	76%	New Measure	We exceeded the target by 10%, which is a great result for the quality of sports fields in the Rodney area. Feedback from residents was especially high regarding levels of maintenance - that grounds are kept clean and tidy, and the overall atmosphere at sports fields.
We provide safe and accessible parks, reserves, and beaches							
The percentage of users who are satisfied with the overall quality of local parks			69%	77%	63%	New Measure	Generally, residents were very satisfied with the quality of local parks. Areas referenced here include overall maintenance, cleanliness, atmosphere, and new playgrounds. Some areas where residents have suggested improvements include quality and lack of toilets, overflowing rubbish bins, dog rules, and long unmowed grass in some parks.
The percentage of residents who visited a local park in the last 12 months			83%	84%	74%	72%	
We showcase Auckland's Māori identity and vibrant Māori culture							
The percentage of local programmes, grants and activities that respond to Māori aspirations			3.0%	17.0%	12.5%	New Measure	The Rodney local board exceeded our target for this measure by 14%. This is large part due to the number of projects funded through the Creative Communities Scheme, which exceeded expectations, and the work done on building relationships with the three local iwi to identify pilot projects to work on together.

1. The target has been exceeded as a result of the initial targets being set with limited baseline data. Targets will be reviewed as part of the 10-year Budget 2021-2031, using the historical results as a realistic baseline.

Local Environmental Management

The major highlight is our Healthy Harbours Riparian Restoration Fund, with \$260,000 allocated by the local board. This fund helps landowners and community groups protect and restore 272 hectares of riparian margins by erecting more than 22 kilometres of fencing along waterways. We also supported work related to the drainage districts programme. The planned pest management plan project was held up due to COVID-19, however a funding agreement has been signed and this work will be completed in 2020/2021.

	Results against target	Year-on-year change	2020 Target	2020 Result	2019	2018	How did we perform
We manage Auckland's natural environment							
The proportion of local programmes that deliver intended environmental actions and/or outcomes			100%	67%	100%	100%	We successfully delivered two of three environmental projects for Rodney. The pest free management plan project was unable to be delivered due to COVID-19, but it will continue in 2020/2021.

Local Planning and Development

We continued our support and engagement with North West Country Incorporated.

	Results against target	Year-on-year change	2020 Target	2020 Result	2019	2018	How did we perform
We help attract investment, businesses and a skilled workforce to Auckland							
The percentage of Business Associations meeting their Business Improvement District (BID) Partnership Programme obligations			100%	100%	100%	100%	North West Country Incorporated has complied with its Business Improvement District (BID) Policy obligations.

Rodney Local Board Transport Targeted Rate

The Rodney Local Board Transport Targeted Rate was introduced in 2018/2019 and the programme continued into the 2019/20 financial year. It collected \$4.336 million in its second year and has seen further progress on the 10-year programme of work consulted on during the 2018-2028 Long-term Plan. To date, \$3.452 million has been spent on bus services, park and ride investigation and design, and bus stops.

The targeted rate has supported the continuation of operational bus services and routes within the board area that were started in 2018/2019:

- Wellsford to Warkworth (998 bus)
- Helensville to Hibiscus Coast Station via Kaukapakapa and Waitoki (128 bus)
- Westgate to Albany, via Riverhead and Coatesville (126 bus).

The Warkworth and Kumeū sites have been selected for park and ride community hubs, and detailed designs are currently being undertaken. The Warkworth site at 80 Great North Road is currently close to design completion, and construction will begin in the 2020/2021 financial year. This site will provide an estimated 131 carparks.

The rate is used to fund the capital and operating costs of additional transport investment and services, and it is reported in the Auckland Council Group Annual Report Volume 1: Overview and Service Performance under the Roads and Footpaths, and Public Transport and Travel Demand Management Groups of Activities.

Te āhuatanga ā-rohe Local flavour

Cleaning up Rodney's rivers and harbours



Earle Barnes installed fencing to exclude stock from a tributary of the Waiteitei River.

The Rodney Local Board Healthy Harbours and Waterways Fund has helped landowners and community groups keen to improve water quality in Rodney.

The fund supports community-led initiatives that restore waterways and wetlands on private and Māori land, with a focus on the Kaipara, Mahurangi and Makarau catchments which have a high concentration of E.coli bacteria.

Farmers James Thompson and Earle Barnes are previous successful applicants to the fund, using the money to do fencing work on their farms.

“This has allowed me to exclude stock from a section of the Makarau River and fence off a feeder gully. Without this funding, I would not have been able to complete these tasks for some time to come.”, says James.

Earle says fencing the river has been good and turned out much better than he expected.

“The plants are regenerating and the Waiteitei stream obviously has improved out of sight. It has all been worthwhile. If I had to do it again I would most definitely do it.”

Since the fund launched three years ago, thousands of metres of stock-proof fencing have been installed and thousands of native shrubs planted.

Te Uri O Hau, through the Te Arai Native Nursery, is also supplying plants. In addition, the council's Water Quality Targeted Rate has contributed to the fund.

The local board is partnering with industry groups Beef and Lamb, Dairy NZ, Fonterra and community group The Forest Bridge Trust. These groups operate within the local board area and work directly with local landowners.

Applicants who meet the fund criteria can apply for funding of up to 50 per cent of their project cost, provided they supply or source the other half of the project's budget.

Te tahua pūtea

Funding impact statement

For the year ended 30 June 2020

\$000s	Notes	Actual 2019/2020	Annual Plan 2019/2020	Annual Plan 2018/2019**
Sources of operating funding:				
General rates, UAGCs, rates penalties		15,643	15,643	15,243
Targeted rates		171	171	181
Subsidies and grants for operating purposes		5	5	5
Fees and charges		151	165	132
Local authorities fuel tax, fines, infringement fees and other receipts	1	592	7	7
Total operating funding		16,562	15,991	15,568
Applications of operating funding:				
Payments to staff and suppliers	2	12,474	11,882	11,771
Finance costs		1,383	1,383	966
Internal charges and overheads applied		2,062	2,062	2,452
Other operating funding applications		0	0	0
Total applications of operating funding		15,918	15,327	15,189
Surplus (deficit) of operating funding		644	664	379
Sources of capital funding:				
Subsidies and grants for capital expenditure		0	0	0
Development and financial contributions		0	0	0
Increase (decrease) in debt	3	5,818	7,994	9,675
Gross proceeds from sale of assets		0	0	0
Lump sum contributions		0	0	0
Other dedicated capital funding		0	0	0
Total sources of capital funding		5,818	7,994	9,675
Application of capital funding:				
Capital expenditure:				
• to meet additional demand		232	772	746
• to improve the level of service		516	1,139	1,024
• to replace existing assets		5,714	6,747	8,284
Increase (decrease) in reserves		0	0	0
Increase (decrease) in investments		0	0	0
Total applications of capital funding	4	6,462	8,658	10,054
Surplus (deficit) of capital funding		(644)	(664)	(379)
Funding balance		0	0	(0)

Variance explanation Actual 2019/2020 to Annual Plan 2019/2020

- Funding from local authorities fuel tax, fines, infringement fees and other receipts was higher than planned primarily due to commercial properties rental and lease revenue. The transfer of ownership of the properties from Panuku Development Auckland Limited to Auckland Council occurred after the Annual Plan was adopted. The associated revenue is recognised as a local operating funding source for the Rodney Local Board.
- Supplier payments were above plan due to higher than anticipated maintenance expenditure on local facilities and reserves. Areas of significant spend were streetscaping services and the maintenance of the sports field at Huapai Recreation Reserve.
- The increase in debt was below plan primarily due to lower than anticipated capital expenditure and an operating funding surplus, which reduced the need for additional debt.
- Capital expenditure was below plan primarily due to slower than planned progression on development of a number of projects in response to the financial impact of the COVID-19 pandemic, including:
 - the walkway and cycleway at Kowhai Park.
 - renewal of residential walkways at Omaha.
 - renewal of coastal structures at Shelly Beach and Whangateau Harbour.
 - town centre works at Helensville and Warkworth.

The underspend was partly offset by progression of a few projects ahead of plan, including the renewal of the carpark and drainage at Shelly Beach Reserve, upgrades at Wellsford Community Centre and the completion of sports field renewals at Rautawhiri Park.

**Year 1 of the Long-term Plan 2018-2028 (10-year Budget 2018-2028).



Auckland Council disclaims any liability whatsoever in connection with any action taken in reliance of this document for any error, deficiency, flaw or omission contained in it.

ISSN 2624-2117 (Print)
ISSN 2624-2125 (PDF)